

Doppstadt

AK-SERIES

SMART SHREDDING

GRINDER LINE



Best Solution. Smart Recycling.

doppstadt.com



POWERFUL AND VERSATILE

The AK Series – reliable grinders.

The high throughput and the patented load-sensing material feed permit using the machine for various grinding tasks. Whatever your application: With the AK you will achieve an optimum and efficient recovery of secondary raw materials.

The Doppstadt grinders stand out for their free-swinging flail holders with separately

replaceable wearing tools and the heavy gyrating mass of the flail drum working at approx. 1,000 rpm.

- Easy maintenance thanks to large protection doors on all sides and central lubrication.
- Separate drives* for scraper floor and feed-in roller optimizing the material feeding and the throughput.

- Hydraulic support, controlled without engine power by an electric 24 Volt pump.
- Short setup times (<10 min.) thanks to the hydraulically foldable discharge conveyor*, optional magnetic pulley for Fe-separation*.

*Option



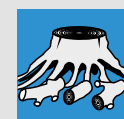
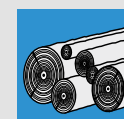
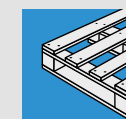
MATERIALS AND APPLICATIONS

ONE Grinder – many possible applications.

The AK grinders process green waste, yard waste, biowaste, pre-shredded logs and roots, waste wood and wooden pallets.

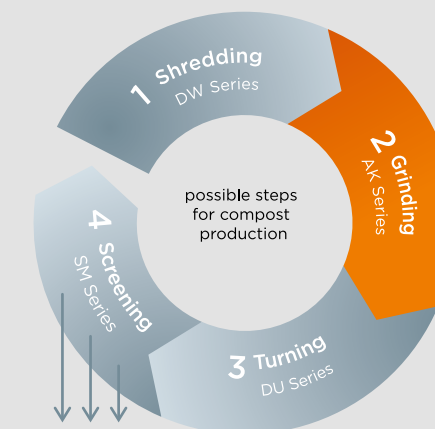
For special applications, the AK grinders can ideally be combined with other DOPPSTADT products, such as shredders or screens. We will be pleased to give you advice.

COMPOSTING, WASTE WOOD PROCESSING



pre-shredded

pre-shredded



DETAILS



SLIP-ON COUPLING

Using the slip-on coupling the machine can be moved with a ball coupling which is fixed e.g. on a wheel loader grab.



HINGED COOLER

The hinged cooler is easily accessible and self-cleaning by the reversible large fan wheel. Thanks to the low ventilator speed the noise level is pleasantly quiet.



FEED-IN ROLLER

The reversible feed-in roller with bearing feeds the material evenly to the grinding chamber.



FLAIL DRUM WITH FREE-SWINGING FLAILS

The large flail drum with its appr. weight of 2.5 t (5,512 lb) gyrating mass grinds the materials. The free-swinging flail holders with easily replaceable tips are resistant against contaminants. The tips can be chosen according to the material.



GRINDING BASKET

The grain size can be determined by choosing among grinding baskets with mesh sizes between 30 mm and 400 mm (1.18 - 15.75"). With the quick-changing system it takes only 15 minutes to change the baskets.



*new option
special fine shredding
basket for waste wood



REAR CONVEYOR

The material is discharged by the rear conveyor. It is also possible to separate iron by means of a magnetic pulley* or an overband magnet*.

SCRAPER FLOOR

The patented, load-sensing scraper floor transports the material to the feed-in roller.



HYDRAULIC DRIVE

The machine can be moved by means of the hydraulic self-propelled drive*.

BAFFLE PLATE

A baffle plate with teeth supports the grinding process.



REMOTE CONTROL

Easy operation - e.g. by wheel loader operator, exact adjustment and reading of the machine data by multifunction display. Machine operation by 18-channel remote control*.



AK 310 ECOPOWER

AK 310 ECOPOWER	
Total weight	16,000 kg (35,274 lb)
Drive	Diesel engine
Type	MTU 6R 1000
Power	230 kW (310 hp) at 2,200 rpm
Exhaust level	Euromot IV / Tier IV final / Euromot III A
Flail drum width	1,470 mm (4'9")
Flail drum diameter	900 mm (2'11")
No. of flails	16 / 28
Transport dimensions L / W / H	9,240 / 2,150 / 3,080 mm (30'3" / 7'0" / 10'1")

Highlights

- latest engine technology with more power and a stronger main drive
- 6 m long rear conveyor belt providing drop heights of 3.5 m
- improved belt drive with hydraulic belt tightener



AK 510 K BIOPOWER

The AK 510 K BioPower is used for shredding of green and garden waste as well as waste wood. He has a track drive and permits an independent maneuvering of the machine without using a tractive unit, even on unsurfaced ground.

AK 510 K BIOPOWER	
Total weight	29,000 kg (63,934 lb)
Drive	Diesel engine
Type	Mercedes-Benz OM 460 LA E3A
Power	375 kW (510 hp) at 2,000 rpm
Exhaust level	Euromot III A
Flail drum width	1,750 mm (5'9")
Flail drum diameter	1,120 mm (3'8")
Flail drum no. of flails	36
Transport dimensions L / W / H	8,680 / 3,000 / 3,390 mm (28'6" / 9'1" / 11'1")





AK 560 ECOPOWER

The flail drum weight of the AK 560 EcoPower is approx. 2.5 t (5,512 lb) and it rotates at approx. 1,000 rpm. The replaceable grinding basket can be equipped with mesh sizes from 30 – 400 mm (1.2 – 15.75").

AK 560 ECOPOWER	
Permissible weight	19,000 kg (41,887 lb)
Drive	Diesel engine
Type	MTU 6R 1300
Power	390 kW (530 PS) at 2,000 min ⁻¹
Exhaust level	Euromot IV / Tier IV final / Euromot III A
Flail drum width	1,750 mm (5'9")
Flail drum diameter	1,120 mm (3'8")
Flail drum no. of flails	36
Transport dimensions L / W / H	9,620 / 2,500 / 3,960 mm (31'7" / 8'2" / 12'9")



AK 560 ECOPOWER PLUS

Higher performance at lower consumption, remote diagnostics by GPS: the three-axle AK 560 EcoPower Plus is the successor model of the AK 510 and it makes some points when it comes to grinding.

AK 560 ECOPOWER PLUS	
Permissible weight	22,000 kg (48,502 lb)
Drive	Diesel engine
Type	MTU 6R 1300
Power	390 kW (530 PS) at 2,000 min ⁻¹
Exhaust level	Euromot IV / Tier IV final / Euromot III A
Flail drum width	1,750 mm (5'9")
Flail drum diameter	1,120 mm (3'8")
Flail drum no. of flails	36
Transport dimensions L / W / H	9,890 / 2,500 / 3,750 mm (32'5" / 8'2" / 12'3")





AK 635 K ECOPOWER

The AK 635 K EcoPower is used for shredding of green and garden waste as well as waste wood. He has a track drive and permits an independent maneuvering of the machine, even on unsurfaced ground.

AK 560 ECOPOWER	
Permissible weight	32,500 kg (71,650 lb)
Drive	Diesel engine
Type	MTU 6R 1500
Power	460 kW (625 hp) at 2,000 rpm
Exhaust level	Euromot IV / Tier IV final / Euromot III A
Flail drum width	1,750 mm (5'9")
Flail drum diameter	1,120 mm (3'8")
Flail drum no. of flails	36
Transport dimensions L / W / H	10,170 / 3,000 / 3,390 mm (33'4" / 9'10" / 11'1")




AK 635 SA ECOPOWER

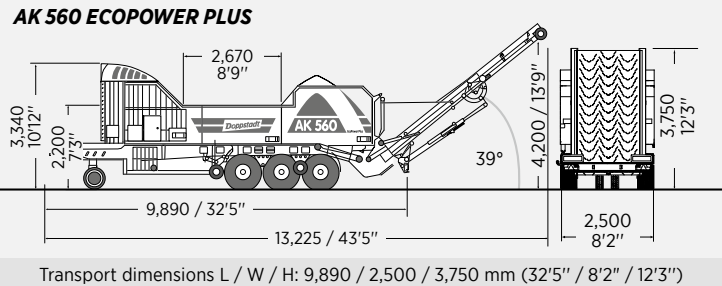
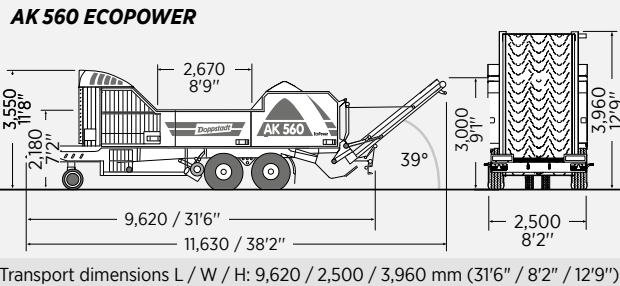
The flail drum weight of the AK 635 SA EcoPower is approx. 2.5 t (5,512 lb) and it rotates at approx. 1,000 rpm. The machine becomes more valuable by the long infeed system to handle big piles of material.

AK 560 ECOPOWER PLUS	
Permissible weight	32,000 kg (70,548 lb)
Drive	Diesel engine
Type	MTU 6R 1500
Power	460 kW (625 hp) at 2,000 rpm
Exhaust level	Euromot IV / Tier IV final / Euromot III A
Flail drum width	1,750 mm (5'9")
Flail drum diameter	1,120 mm (3'8")
Flail drum no. of flails	36
Transport dimensions L / W / H	12,410 / 2,500 / 3,930 mm (40'9" / 8'2" / 12'11")

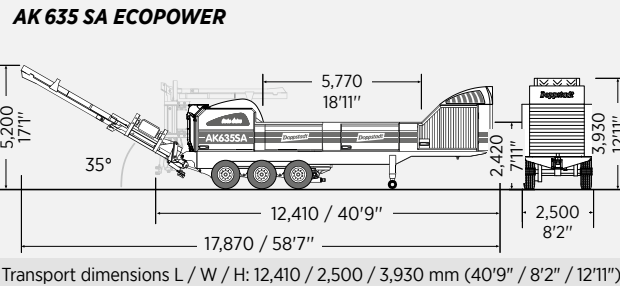
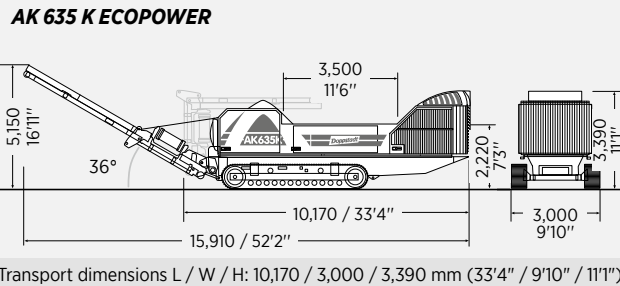


TECHNICAL DATA

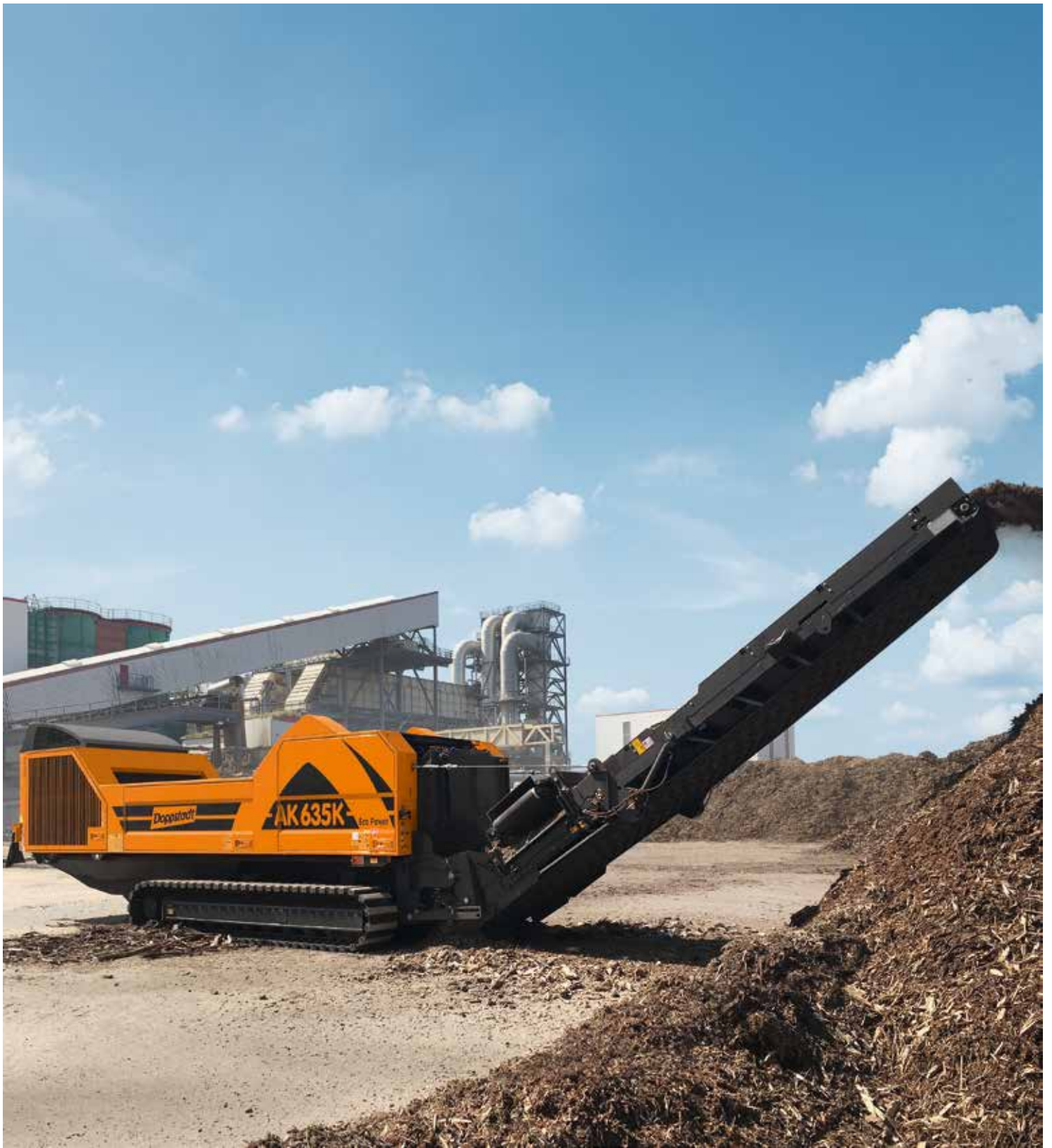
AK-SERIES		AK 560 ECOPOWER		AK 560 ECOPOWER PLUS	
					
Weight	19,000 kg (41,887 lb)		22,000 kg (48,501 lb)		
Chassis	Central-axle trailer chassis with 2 axles, for 80 km/h (50 mph), with ABS		Central-axle trailer chassis with 3 axles, for 80 km/h (50 mph), with ABS		
Drive	Diesel engine		Diesel engine		
Type	MTU 6R 1300	Mercedes-Benz OM 460 LA.E3A	MTU 6R 1300	Mercedes-Benz OM 460 LA E3A	
Power	390 kW (530 hp) at 2,000 rpm	375 kW (510 hp) at 2,000 rpm	390 kW (530 hp) at 2,000 rpm	375 kW (510 hp) at 2,000 rpm	
Max. torque	2,460 Nm at 1,300 rpm	2,800 Nm at 1,300 rpm	2,460 Nm at 1,300 rpm	2,150 Nm at 1,300 rpm	
Exhaust level	EUROMOT IV / Tier IV final	Euromot III A	EUROMOT IV / Tier IV final	Euromot III A	
Fuel tank	450 l (119 gal)		600 l (159 gal)		
Flail drum Width	1,750 mm (5'9")		1,750 mm (5'9")		
Flail drum Diameter	1,120 mm (3'8")		1,120 mm (3'8")		
Flail drum Weight (with flail tips)	Approx. 2,500 kg (5,512 lb)		Approx. 2,500 kg (5,512 lb)		
No. of flails/teeth	36		36		
Flail weight (incl. tip)	approx. 14.5 kg (31 lb)		approx. 14.5 kg (31 lb)		
Max. infeed height	650 mm (2'2")		650 mm (2'2")		
Discharge conveyor Length	4,000 mm (13'1")* / 6,000 mm (19'8")*		6,000 mm (19'8")		
Discharge conveyor Width	1,800 mm (5'11")		1,800 mm (5'11")		
Discharge conveyor Belt speed	2.0 m/s (6'3")		2.0 m/s (6'3")		
Discharge conveyor height	3,000 mm (9'10") / 4,200 mm (13'9")		4,200 mm (13'9")		
Standard equipment	Grinding basket, available mesh sizes 30 – 400 mm (1.2 – 15.75"), remote control, baffle plate (various types selectable), re-grinding comb		Additional hydraulic connection, remote control, grinding basket, available mesh sizes 30 – 400 mm (1.2 – 15.75"), independent drive for infeed roller and scraper floor, Fuel tank 600 l, baffle plate (various types selectable), rear conveyor 6 m		
Options	Additional hydraulic connection, hydraulic self-propelled drive, magnetic pulley, rear conveyor overband magnet, winter equipment, independent drive for infeed roller and scraper floor, damping facility, Fuel tank 600 l, fine shredding basket "waste wood", dust and noise protection hood, two versions of rear conveyor belts: 4 m "classic" or new 6 m "light" ^{*optional}		Hydraulic self-propelled drive, Neodym magnetic pulley with chute, rear conveyor overband magnet, winter equipment, damping facility, fine shredding basket "waste wood", dust and noise protection hood		



AK-SERIES		AK 635 K ECOPOWER		AK 635 SA ECOPOWER	
					
Weight	19,000 kg (41,887 lb)		22,000 kg (48,501 lb)		
Chassis	Track drive with two speeds		3-axle-semitrailer chassis, for 80 km/h (50 mph), with ABS		
Drive	Diesel engine		Diesel engine		
Type	MTU 6R 1500	MTU 6R 1500	MTU 6R 1300	Mercedes-Benz OM 460 LA E3A	
Power	460 kW (625 hp) at 2,000 rpm	460 kW (625 hp) at 2,000 rpm	390 kW (530 hp) at 2,000 rpm	375 kW (510 hp) at 2,000 rpm	
Max. torque	2,900 Nm at 1,300 rpm	2,900 Nm at 1,300 rpm	2,900 Nm at 1,300 rpm	2,150 Nm at 1,300 rpm	
Exhaust level	EUROMOT IV / Tier IV final	Euromot III A	EUROMOT IV / Tier IV final	Euromot III A	
Fuel tank	750 l (198 gal)		600 l (159 gal)		
Flail drum Width	1,750 mm (5'9")		1,750 mm (5'9")		
Flail drum Diameter	1,120 mm (3'8")		1,120 mm (3'8")		
Flail drum Weight (with flail tips)	Approx. 2,500 kg (5,512 lb)		Approx. 2,500 kg (5,512 lb)		
No. of flails/teeth	36		36		
Flail weight (incl. tip)	Approx. 14.5 kg (31 lb)		Approx. 14.5 kg (31 lb)		
Max. infeed height	650 mm (2'2")		650 mm (2'2")		
Discharge conveyor Length	8,000 mm (26'3")		8,000 mm (26'3")		
Discharge conveyor Width	1,500 mm (4'11")		1,500 mm (4'11")		
Discharge conveyor Belt speed	2.0 m/s (6'7")		2.0 m/s (6'7")		
Discharge conveyor height	5,150 mm (16'11")		5,200 mm (17'1")		
Standard equipment	Additional hydraulic connection, remote control, grinding basket, available mesh sizes 30 – 400 mm (1.2 – 15.75"), independent drive for infeed roller and scraper floor, baffle plate (various types selectable)		Additional hydraulic connection, reomte control, hydraulic self-propelled drive, grinding basket, available mesh sizes 30 – 400 mm (1.2 – 15.75"), independent drive for infeed roller and scraper floor, damping facility, baffle plate (various types selectable)		
Options	Neodym magnetic pulley with chute, rear convey-or overband magnet, winter equipment, damping facility, fine shredding basket "waste wood", dust and noise protection hood		Neodym magnetic pulley with chute, rear conveyor overband magnet, winter equipment, fine shredding basket "waste wood", dust and noise protection hood		



As of April 2018 – subject to technical alterations. The specifications are approximate. Illustrations and descriptions may include options that are not part of the standard equipment.



doppstadt.com

Werner Doppstadt
Umwelttechnik GmbH & Co. KG
Steinbrink 13, 42555 Velbert
Deutschland

Telefon +49 2052 889-0
info@doppstadt.de