

McCourt Equipment, Inc.
5141 W State Highway 71
La Grange, Texas 78945



Office 979-242-5298
Fax 979-242-5292
Toll Free 888-838-9252

www.mccourtequipment.com

Superior Sentry® 4250 Closed Circuit Horizontal Shaft Impactor Plant

Year: 2025

Serial Number: 2594509

Approx. Hours: Electric







**Superior Sentry® 4250 Closed Circuit Horizontal Shaft Impactor Plant****Carrier Chassis**

Construction	Main frame constructed of wide flange structural steel beams
Axle	Triple axle with (12) 11Rx22.5 radial tires
Booster Axle	Single Axle with (4) 11Rx22.5 radial tires - Superior Supplied
Fifth wheel	Included
Brakes	Complete air brake package
Lights	Brake and directional signals
Mud flaps	Installed behind transport wheels
Cribbing legs	(8) fixed structural steel cribbing legs
Grease Package	Remote grease station, multiple grease points outside of chassis frame
Landing Gear	(6) Hydraulic run-on leveling legs with 9HP Hona Power Unit
Tool Box	Aluminum tool box
Paint	Standard paint - Graphite Gray [RAL 7024] on Chassis
Guarding Paint	TBD

Sentry 4250 Horizontal Shaft Impactor

4250 HSI Crusher	Superior 4250 HSI recycle HSI crusher
Crusher Components	Driven sheave on crusher
Horsepower Requirements	(1) 250 HP Drive sheave, drive belts and drive guard
Crusher Hoppers	Crusher Feed Chute with chain and rubber curtain
Paint	Standard paint - Window Gray [RAL 7040] on HSI. Graphite Gray [RAL 7024] on guarding

Intrepid® Vibrating Pan Feeder

4812 VPF	Vibrating 48x12 Pan Feeder
Electric Drive Motor	(2) 8.5HP 900 RPM drive motors
Feeder Angle	Feeder mounted horizontally (0 degrees)
Paint	Standard paint - Window Gray [RAL 7040] on feeder body. Graphite Gray [RAL 7024] on guarding

Pre-Screen Module

	4' x 6' Pre-Screen Module
	(2) Deck design. Top Deck: finger tines spaced at 2" Bottom Deck: Set up for end tension screen cloth or blanking mat
	(2) 4.3HP 900 RPM drive motors Module mounted horizontally (0 degrees)
Paint	Standard paint - Window Gray [RAL 7040] on feeder body. Graphite Gray [RAL 7024] on guarding

Anthem 6162 Inclined screen

Screen Size	Guardian 6x16 2-deck Inclined screen
Drive	Right hand
Configuration	Operate in inclined position, hydraulic raise, mechanically pinned in operating position
Motor	30 HP, 1200 RPM TEFC, NEMA Premium "Design C"
Shaft Housing	Mild steel protection clamped to shaft housing
Springs	Standard coil springs
Feed Box	24" Feedbox with 1/4" AR liners
Deck	Single crown deck to support wire cloth media screen
Screen Media	Customer supplied and installed
Paint	Standard paint - Window Gray [RAL 7040] on feeder body. Graphite Gray [RAL 7024] on guarding

Undercrusher Pan Feeder

Feeder	48" x 78" Electromechanical Vibratory Feeder
Power	(2) 2.7 Hp (ATL starters required)
Liners	Replaceable 1/4" AR400 Liners Mounted below crusher, accepts feed from crusher and discharges onto crusher discharge conveyor
Paint	Standard paint - Window Gray [RAL 7040] on feeder body. Graphite Gray [RAL 7024] on guarding

Superior Sentry® 4250 Closed Circuit Horizontal Shaft Impactor Plant
48" Crusher Discharge conveyor

Frame	Channel frame conveyor, discharges material onto the screen feed conveyor
Fold	Hinged section that raises with the screen
Drive	15 HP 1800 RPM TEFC
Gear Reducer	Dodge
Belt Drive	V-belt with Drive Guard
Drive Pulley	16" diameter, crown face, 3/8" herringbone lagged drum
Tail Pulley	14" diameter Chevron® wing pulley
Bearings	Dodge bearings
Belting	3 ply 3/16 x 1/16 330 PIW
Splice	Vulcanized
Load Area	Superior Cema C, 5" Rubber Impact rolls (QTY4)
Trough	Superior CEMA C, 5" 35° Steel rolls
Returns	Superior CEMA C, 5" Flat steel rolls
Take ups	Manual screw type take-ups
Scraper	Exterra® Click Tensioner primary belt cleaner
Magnet	Self-Cleaning Suspended Permanent Magnet

48" Screen Fines conveyor

Construction	1/4" AR plate steel sides
Operation	raises and lowers with screen structure
Material	Receives screen undersize material and discharges off plant
Flashing	Adjustable rubber full length
Fines Hopper Liner	Not Included
Construction	48" belt width, structural steel channel main frame
Motor	15 HP 1800 RPM TEFC
Gear Reducer	Dodge
Belt Drive	V-belt with Drive Guard
Drive pulley	12" diameter, 3/8" herringbone lagged drum
Tail pulley	12" diameter, Chevron® wing pulley
Bearings	Dodge bearings
Belting	3 ply 3/16 x 1/16 330 PIW
Splice	Vulcanized
Trough	Superior CEMA C, 5" Steel rolls
Returns	Superior CEMA C, 5" Flat steel rolls
Take ups	Manual screw type take-ups
Scraper	Exterra® Click Tensioner primary belt cleaner

(2) 24" wide x 12' long reversing cross conveyor

Frame	Structural steel channel main frame
Operation	Mounted angle iron slide track to manually move to discharge from either side of chassis
Material	Receives top and bottom deck oversize material
Drive	7.5 HP 1800 RPM TEFC
Gear Reducer	Dodge
Belt Drive	V-belt with Drive Guard
Drive pulley	10" diameter drum, crown face, 3/8" diamond lagging
Tail pulley	10" diameter wing pulley
Bearings	Dodge bearings
Belting	Belting - 3 ply, 3/16" x 1/16" 330 PIW
Splice	Vulcanized
Trough	Superior CEMA C, 5" Steel rolls, Channel Mount
Returns	Superior CEMA C, 5" Flat steel rolls
Take ups	Manual screw type take-ups
Scraper	Exterra® Click Tensioner primary belt cleaner

Superior Sentry® 4250 Closed Circuit Horizontal Shaft Impactor Plant**(1) 24" wide x 12' long reversing grizzly fines conveyor**

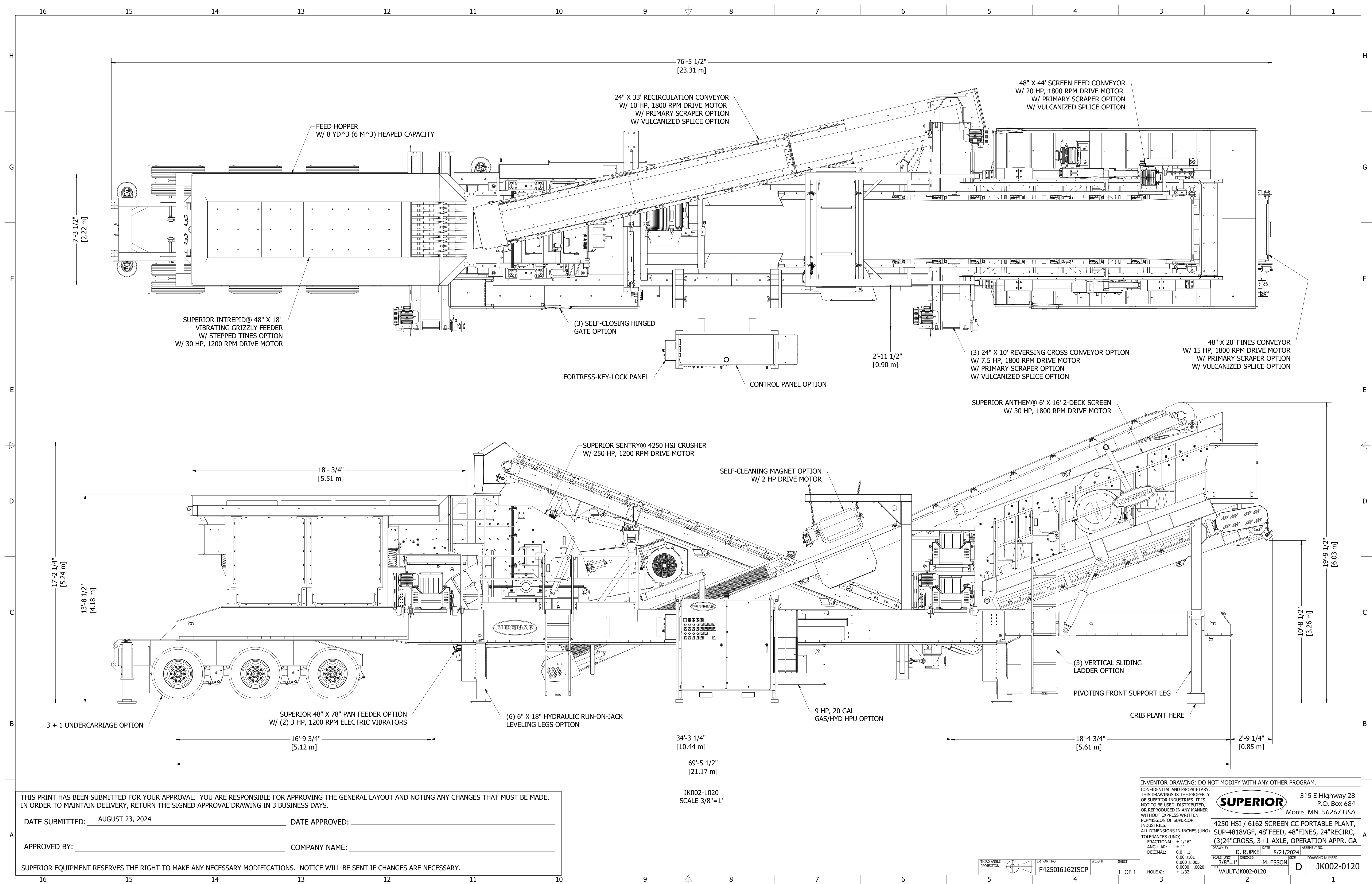
Frame	Structural steel channel main frame
Operation	Mounted angle iron slide track to manually move to discharge from either side of chassis
Material	Receives grizzly fines material and discharges off plant
Drive	7.5 HP motor, v-belt drive with drive guard
Gear Reducer	Dodge shaft mount reducer
Head Pulley	Head pulley - 10" diameter drum, crown face, 3/8" diamond lagging
Tail Pulley	Tail pulley - 10" diameter wing pulley
Bearings	Dodge bearings
Take Ups	Manual screw take-ups
Superior Idlers	Carry idlers - C5, 20 degrees trough, channel mount, spaced 26" OC
Belting	Belting - 3 ply, 3/16" x 1/16" 330 PIW
Splice	Belt splice - Vulcanized
Scraper	Exterra® Click Tensioner primary belt cleaner

(1) 24" wide x 33' long recirculation conveyor

Frame	Structural steel channel main frame
Operation	Hydraulic raise and lower from transport to operating position
Material	Receives screen oversize material from cross conveyor(s)
Drive	10 HP motorized head pulley
Head Pulley	Motorized - 12" diameter drum, crown face, 3/8" diamond lagging
Tail Pulley	Tail pulley - 10" diameter wing pulley
Bearings	Dodge bearings
Belting	Belting - 3 ply, 3/16" x 1/16" 330 PIW
Splice	Vulcanized
Trough	Superior CEMA C, 5" Steel rolls, Channel Mount
Returns	Superior CEMA C, 5" Flat steel rolls
Take ups	Manual screw type take-ups
Scraper	Exterra® Click Tensioner primary belt cleaner

Electrical

Voltage	480v / 3 ph / 60hz
Panel Enclosure	Skid mounted panel, with lifting eyes. Travels on plant and removed for operation
Components	NEMA components, with start/stop pushbuttons, amp meter, hour meter and warning light
Starters	Starters for all on plant motors and (2) additional #2 starters (up to 25 HP motors), VFD for VGF, Soft Start for Crusher Motor
Wiring	Factory supplied and installed wiring from panel to all on board motors. Customer responsible for wiring power into control panel, and additional starters





PORTABLE SENTRY® HSI PLANT

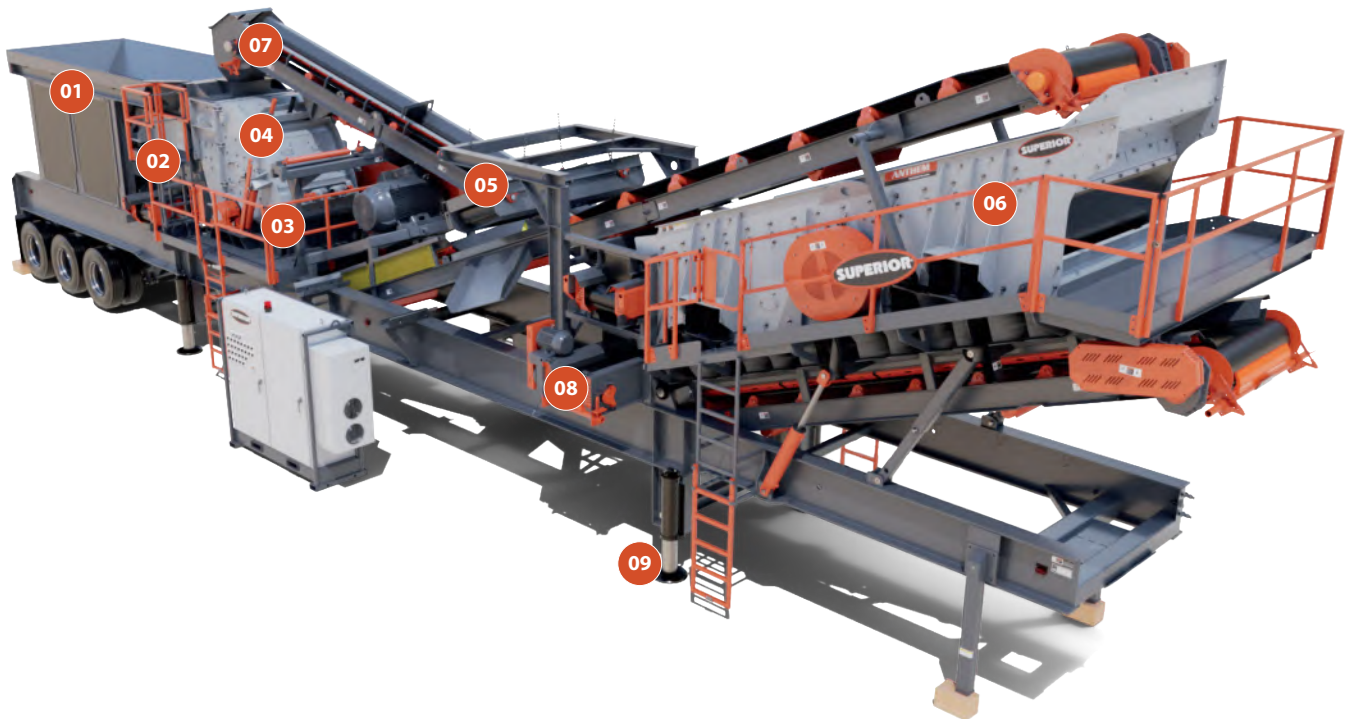
Closed Circuit Crushing & Screening on a Wheeled Chassis



42x50 SENTRY HORIZONTAL SHAFT IMPACTOR

FEATURES

- » Process recycled concrete, reclaimed asphalt, and pit run into valuable products
- » Produce up to four unique products from a single feed
- » Recirculating conveyor centralizes feed, which extends life of HSI blow bars
- » Rotate universally designed, interchangeable cross conveyors throughout the plant
- » Accommodates line power, but can be outfitted with a diesel drive genset unit
- » Vertically integrated manufacturing allows us to fine tune design for your application



01/INTREPID® VGF

A rear mounted vibrating grizzly feeder allows operators to feed from three sides of the chassis.

02/INTEGRATED FINES BAFFLE

Fitted with a screen panel to allow for an accurate cut below the VGF.

03/INTEGRATED PAN FEEDER

Directs any steel out of the crusher to protect the plant from this damaging fugitive material.

04/SENTRY HSI CRUSHER

Designed with proper spacing inside chamber for processing larger feed sizes into cube-shaped products.

05/SELF-CLEANING MAGNET

Removes steel from crushed material.

06/ANTHEM® INCLINED SCREEN

Extra clearance designed between decks for easier change out of media.

07/RECIRCULATING CONVEYOR

Allows for centralized feed to crusher, which optimizes the life of the blow bars and lowers your cost per ton.

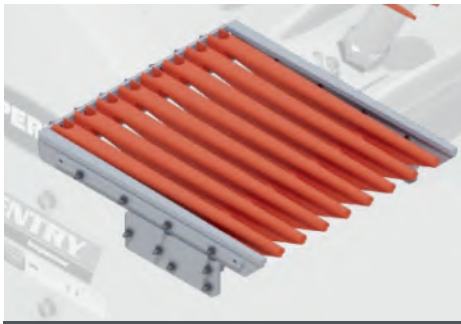
08/INTERCHANGEABLE CROSS CONVEYORS

Common design for all cross conveyors means they can be mixed and matched around the plant.

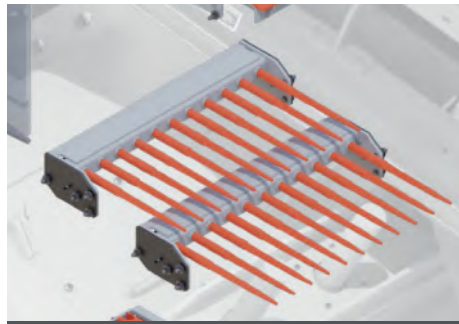
09/HYDRAULIC LEVELING LEGS

Allows operators to safely and quickly convert from road transport to operational mode in minutes.

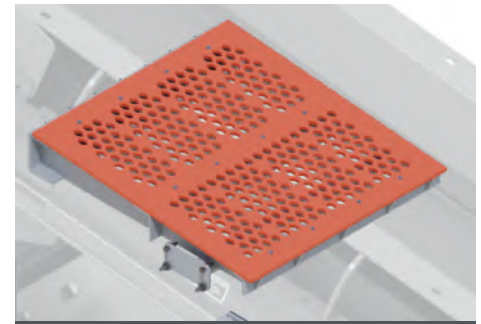
INTERCHANGEABLE GRIZZLY SECTIONS



GRIZZLY BARS

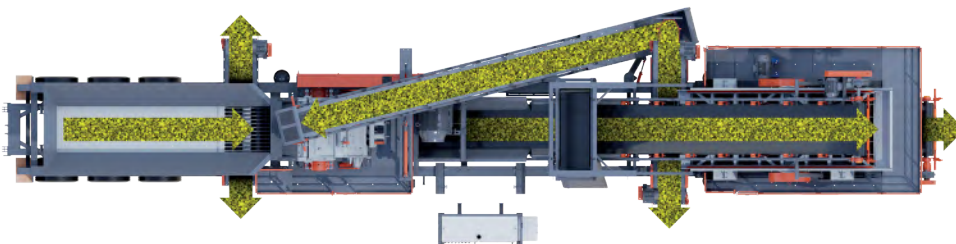


FINGER TINES



PUNCH PLATE

PLANT FLOW

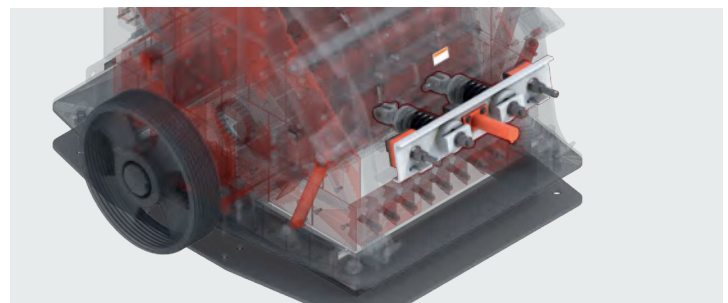


- » Recycled material is introduced at the VGF.
- » Oversized material travels to the HSI to be crushed.
- » Undersized material travels to the pan feeder to be screened.
- » Rejected fines can be removed via a cross conveyor under the VGF.
- » Crushed material travels to the screen for sorting.

SENTRY HSI HIGHLIGHTS



CAST HIGH INERTIA ROTOR



HYDRAULIC CLOSED SIDE SETTING (CSS ADJUSTMENT)



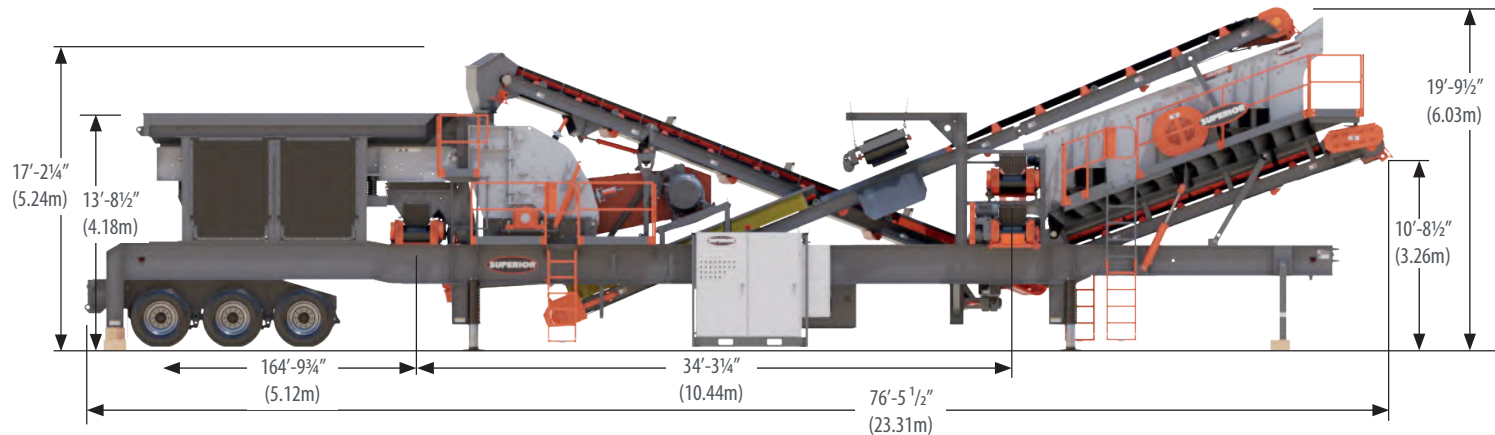
HYDRAULIC OPEN AND CLOSE LID



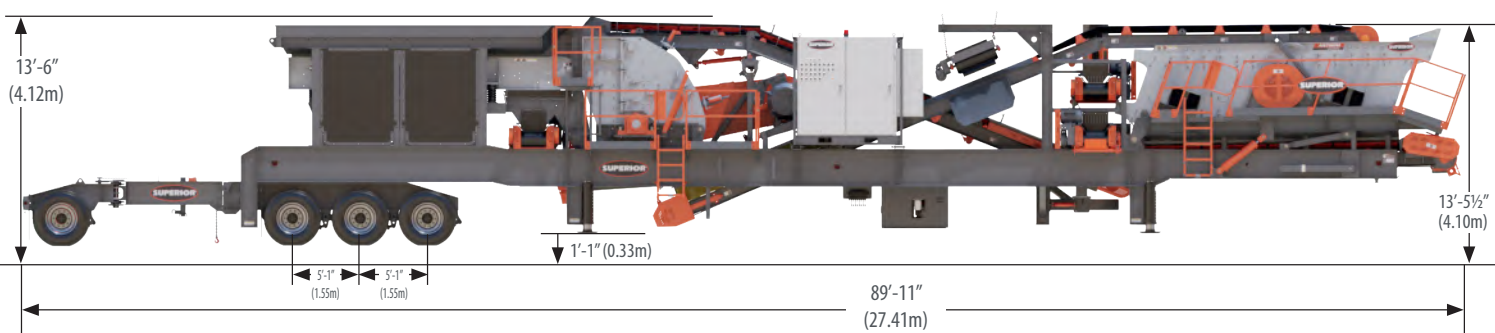
COMMONLY-SHAPED SIDE LINERS

DIMENSIONS

OPERATING POSITION



TRANSPORT POSITION



REAR TRANSPORT

